

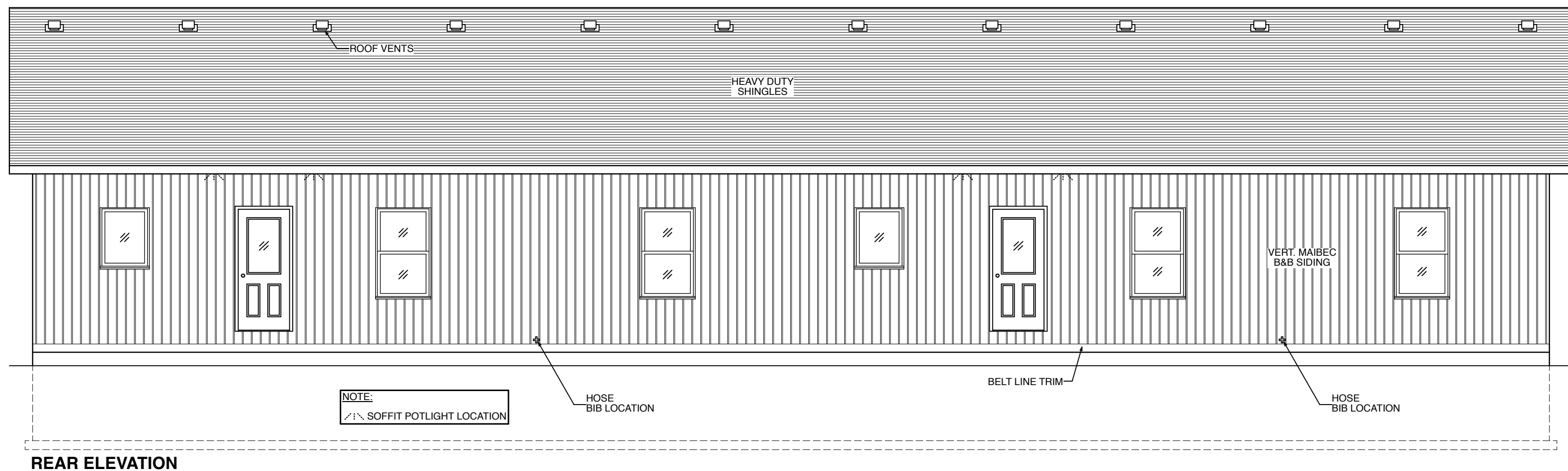
FRONT ELEVATION

GLASS/HEATED WALL AREA

TOTAL HEATED WALL AREA = 1273.2 sq.ft. (118.3M)
TOTAL GLASS AREA = 92.6 sq.ft. (8.6M)
THEREFORE THE GLASS TO HEATED WALL AREA IS 7.3%

MAIBEC SIDING INSTALLATION NOTE:

MAINTAIN A 2" GAP FROM ROOF, DECK & PORCH SURFACES. PLEASE SEE INSTALLATION INSTRUCTIONS.



REAR ELEVATION

SB-12 COMPLIANCE OPTION

THESE PLANS HAVE BEEN PREPARED IN ACCORDANCE WITH THE SB-12 PRESCRIPTIVE OPTION AS PER SUBSECTION 3.1.1. OF SB-12.
(SEE DRAWING #6 FOR DETAIL)

DESIGN DATA — SITE LOCATION :

COBDEN, ON
SNOW LOAD : 2.5 kPa (PEMBROKE)
SPECIFIED SNOW LOAD : 1.78 kPa
ZONE : 1 (4980 HEATING DEG. DAYS)

PERMIT PRINTS

THESE ARE YOUR FINAL PRINTS FROM WHICH WE WILL BUILD YOUR HOME. ANY CHANGES WILL BE SUBJECT TO A MINIMUM \$1000 CHARGE PER CHANGE.

DRAWING LOG

PERMIT PRINTS OCT 3/25



ROYAL HOMES CORPORATION

WINGHAM, ONTARIO - CANADA

COPYRIGHT OWNED BY ROYAL HOMES CORPORATION (2025)

BUILDING CODE QUALIFICATION

THE DRAWING PACKAGE ENCLOSED HAS BEEN REVIEWED IN ACCORDANCE WITH THE QUALIFICATION PROGRAM OUTLINED BY THE O.B.C.

DESIGNER :KEN ATKINSON

BCIN :23281

SIGNATURE :

FOR : PRIMARY ELEMENT CORPORATION

**PROJECT : PM #10771
CUSTOM**

DATE : Friday, October 3, 2025

DRAWN BY : OL

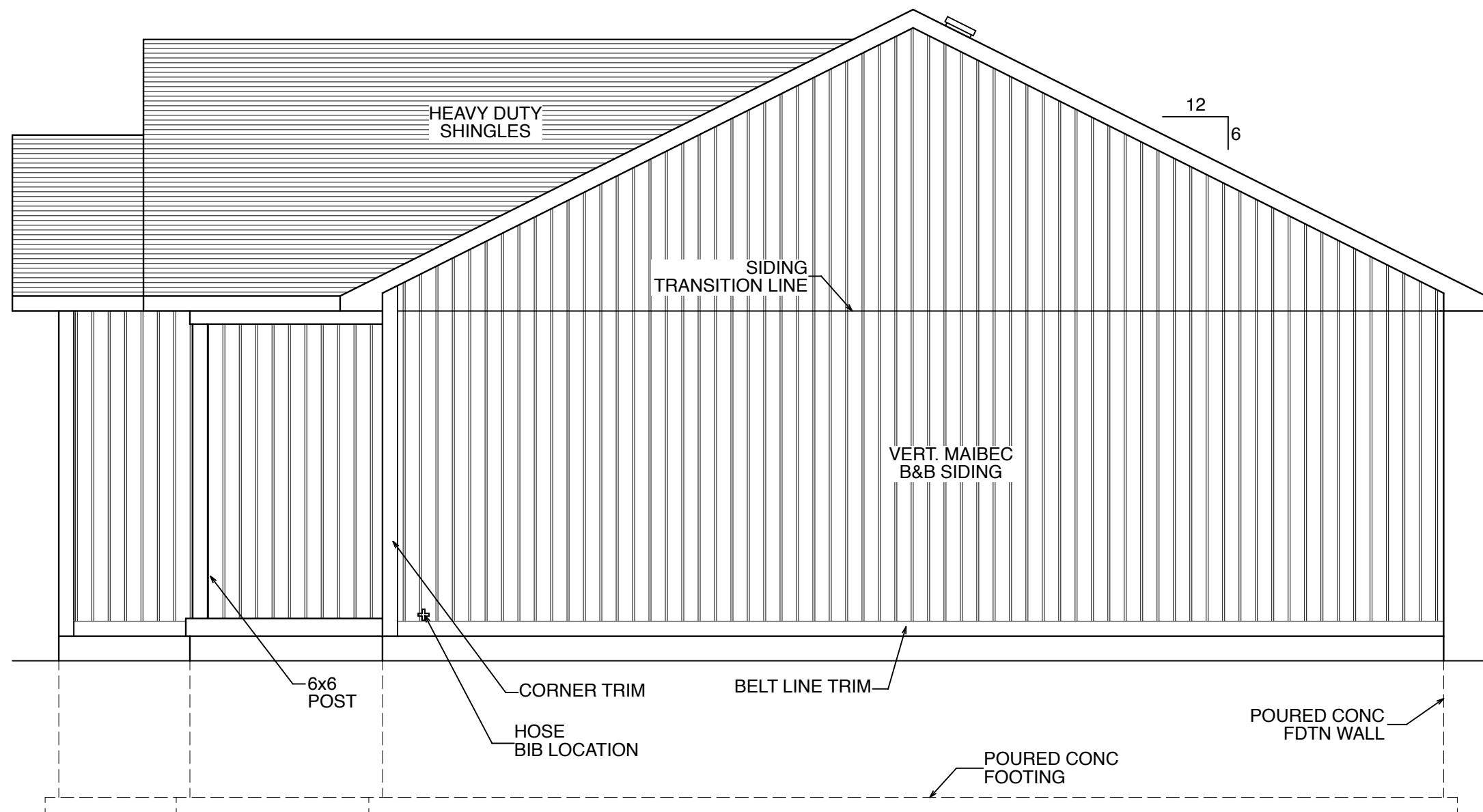
APPROVED BY :

CSA CERTIFIED - CAN/CSA-A277-16

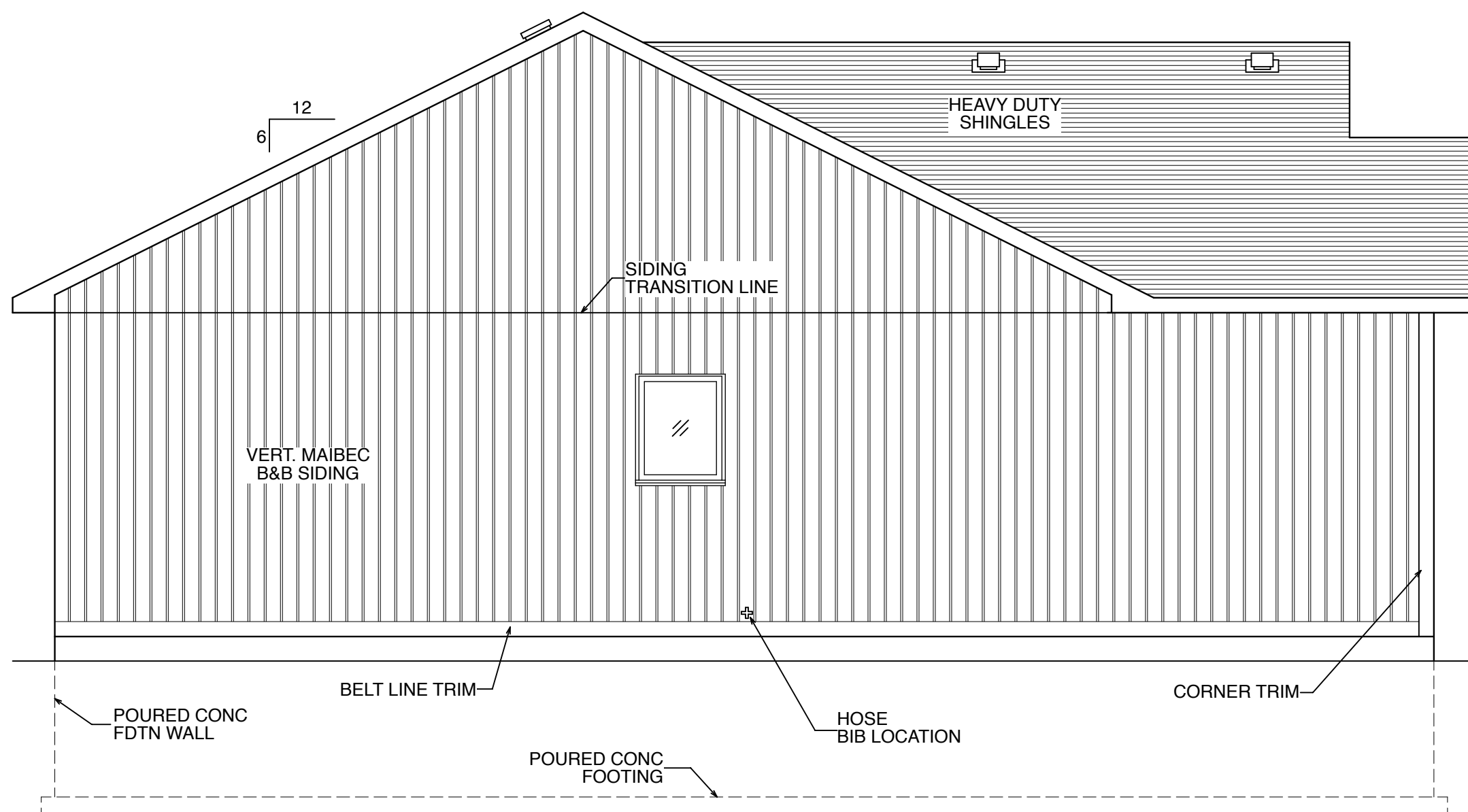
SCALE : 3/16" = 1'-0"

DWG#

1



MAIBEC SIDING INSTALLATION NOTE:
MAINTAIN A 2" GAP FROM ROOF, DECK & PORCH SURFACES. PLEASE SEE INSTALLATION INSTRUCTIONS.



SB-12 COMPLIANCE OPTION

THESE PLANS HAVE BEEN PREPARED IN ACCORDANCE WITH THE SB-12 PRESCRIPTIVE OPTION AS PER SUBSECTION 3.1.1. OF SB-12.
(SEE DRAWING #6 FOR DETAIL)

DESIGN DATA — SITE LOCATION :

COBDEN, ON
SNOW LOAD : 2.5 kPa (PEMBROKE)
SPECIFIED SNOW LOAD : 1.78 kPa
ZONE : 1 (4980 HEATING DEG. DAYS)

PERMIT PRINTS

THESE ARE YOUR FINAL PRINTS FROM WHICH WE WILL BUILD YOUR HOME. ANY CHANGES WILL BE SUBJECT TO A MINIMUM \$1000 CHARGE PER CHANGE.

DRAWING LOG

PERMIT PRINTS OCT 3/25



ROYAL HOMES CORPORATION

WINGHAM, ONTARIO - CANADA

COPYRIGHT OWNED BY ROYAL HOMES CORPORATION (2025)

BUILDING CODE QUALIFICATION

THE DRAWING PACKAGE ENCLOSED HAS BEEN REVIEWED IN ACCORDANCE WITH THE QUALIFICATION PROGRAM OUTLINED BY THE O.B.C.

DESIGNER :KEN ATKINSON

BCIN :23281

SIGNATURE :

FOR : PRIMARY ELEMENT CORPORATION

PROJECT : PM #10771
CUSTOM

DATE : Friday, October 3, 2025

DRAWN BY : OL

APPROVED BY :

CSA CERTIFIED - CAN/CSA-A277-16

SCALE : 1/4" = 1'-0"

DWG#

2

EXTERIOR NOTES:
-4 SIDES MAIBEC SIDING INCLUDING THE GABLES & GARAGE BY RHC - INSTALL AS MUCH AS POSSIBLE AND SUPPLY ONLY THE REMAINDER
-GABLE VENTS AS PER ELEV SUPPLY ONLY BY RHC
-WINDOW/DOOR TRIM AS PER ELEV BY RHC
-BELT LINE TRIM AS PER ELEV SUPPLY ONLY BY RHC
-SOFFIT ACCENT TRIM AS PER ELEV SUPPLY ONLY BY RHC
-EYEBROW ROOF AS PER ELEV BY PURCHASER
-SHUTTERS AS PER ELEV BY RHC

GENERAL NOTES:
1. 1/2" PLYWOOD ROOF SHEATHING
2. 7/16" O.S.B. WALL SHEATHING
W/ BUILDING WRAP & 1 1/2" CODEBOARD INSULATION (R7.5).
3. 1X3 VERTICAL STRAPPING @ 16" O.C. FOLLOWED BY 1X3 HORIZONTAL STRAPPING @ 12" O.C.

LEGEND	
	COMBINATION SMOKE ALARM / STROBE / CARBON MONOXIDE DETECTOR. (INTERCONNECTED W/ ALL OTHER SMOKE ALARM/ STROBE & SMOKE ALARM/STROBE/CO DETECTORS)
	SMOKE ALARM / STROBE UNIT. (INTERCONNECTED W/ ALL OTHER SMOKE ALARM/ STROBE & SMOKE ALARM/STROBE/CO DETECTORS)
	TELEPHONE JACK ROUGH-IN(Cat 6 WIRE W/ CONDUIT FROM BOX TO UNDER FL)
	TELEVISION JACK ROUGH-IN(Cat 6 & COAXIAL WIRE W/ CONDUIT FROM BOX TO UNDER FL)
	THERMOSTAT LOCATION
	HOSE BIB
	CHIME BOX (ABOVE DOOR)
	DOOR BELL
	HRV CONTROL
	RECESSED POTLIGHT
	RECESSED SOFFIT POTLIGHT
	METER BASE LOCATION
	BATH EXHAUST FAN (CEILING)

HRV SYSTEM:
SIMPLIFIED HRV SYSTEM
RANGE HOOD VENTED TO EXTERIOR
EXHAUST FANS IN ALL BATHROOMS

NOTE:
SITE ELECTRICAL HOOK-UP
OF HOME AS PER CONTRACT BY PURCHASER

EAVESTROUGH &
DOWNSPOUTS
BY PURCHASER

NOTE:
FORCED AIR NATURAL GAS FURNACE
BY PURCHASER

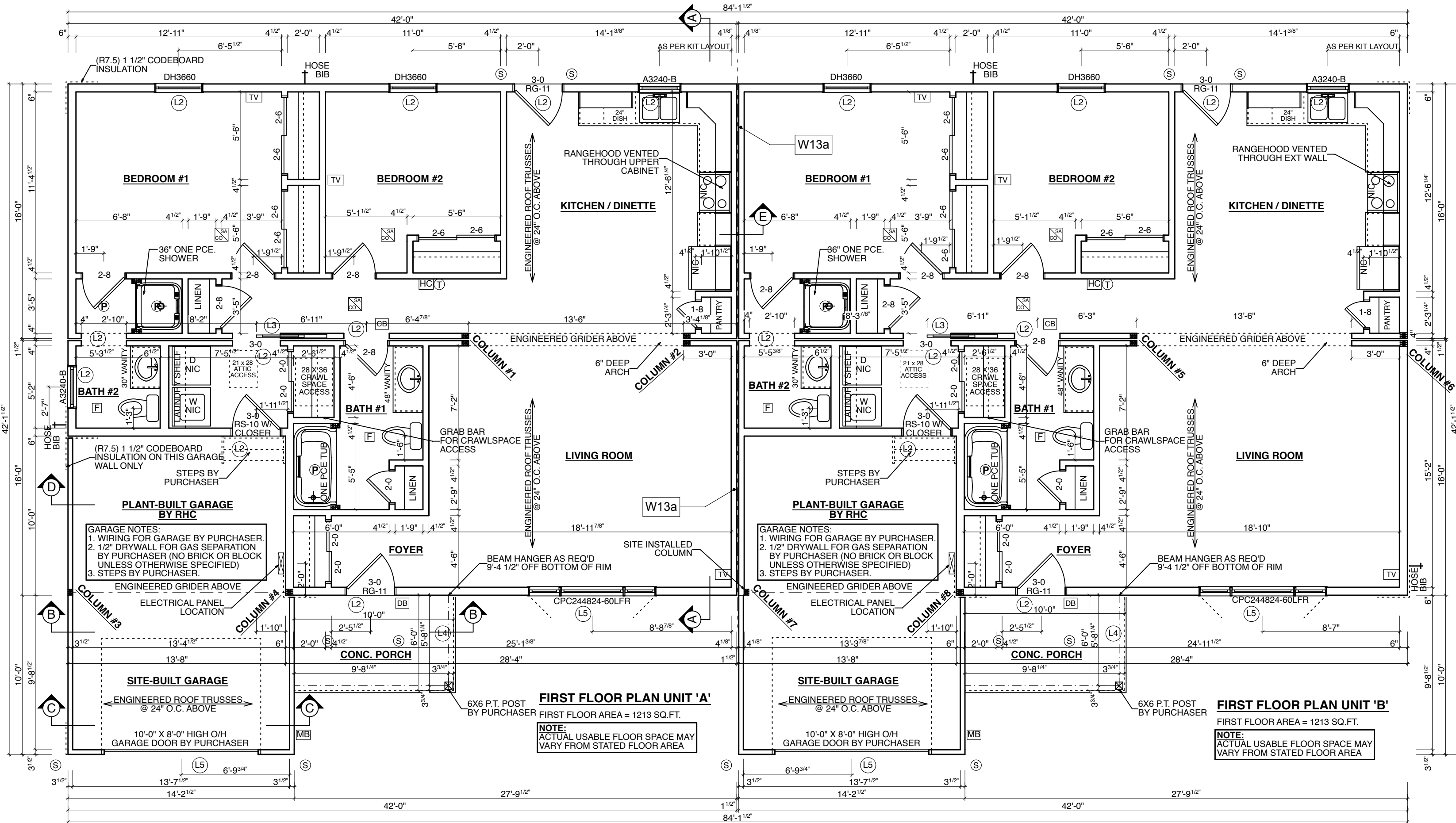
NOTE:
LOW "E" ARGON WINDOWS

NOTE:
DECORA SWITCHES & RECEPTACLES

NOTE:
6/12 ROOF PITCH ON MAIN
HOME W/ 1'-5" OVERHANGS
UNLESS OTHERWISE NOTED

NOTE:
UPGRADE 1ST FLOOR CEILING
TO 9'-0" HIGH

WOOD LINTEL SCHEDULE	
LINTEL ID	LINTEL SIZE
(L1)	2-2x4
(L2)	2-2x6
(L3)	2-2x8
(L4)	2-2x10
(L5)	2-2x12
LINTELS OVER 8'-0" IN LENGTH REQUIRE DOUBLE JACK STUDS.	
LINTELS ARE MADE OF SPRUCE -PINE-FIR No.1 OR No.2 GRADE.	



FIRE WALL LEGEND

SUPPLEMENTARY STANDARD SB-3 OBC 2012 & TABLE 5.10.3.1.A OF THE NBC.
ASSEMBLY # W13a (60 MIN. FIRE RESISTANCE RATING & 57 SOUND TRANSMISSION CLASS)
5/8" TYPE 'X' GYPSUM BOARD SCREWED TO 2x4 WOOD STUDS @ 16" O.C.
3 1/2" GLASS FIBER INSULATION
1 1/2" AIRSPACE
3 1/2" GLASS FIBER INSULATION
2x4 WOOD STUDS @ 16" O.C.
5/8" TYPE 'X' GYPSUM BOARD SCREWED TO STUDS

NOTE:
UPGRADE CASING & BASEBOARD
AS PER C-C (CONFIRM CASING SIZE
@ FINAL PRINTS)

NOTE:
UPGRADE VINYL PLANK FLOORING
AS PER C-C

NOTE:
RHC TO SUPPLY ONLY THE FOLLOWING
FOR GARAGE & PORCH:
-ROOF TRUSSES & PLYWOOD SHEATHING
-SHINGLES
-SOFFIT & FASCIA
-VINYL SIDING

WOOD COLUMN SCHEDULE		ANCHORING QUANTITY
COLUMN ID	COLUMN SIZE	
COLUMN #1	TBD	TBD
COLUMN #2	TBD	TBD
COLUMN #3	TBD	TBD
COLUMN #4	TBD	TBD
ANCHORING NOTES:		
1) USE (1) SIMPSON STRONG-TIE CS16 STRAP BOTH TOP & BOTTOM W/ 8-8d NAILS @ EACH END (16 PER STRAP)		

NOTE:
BLOCKING TO BE INSTALLED
AT ALL TOILETS FOR FUTURE
GRAB BARS

NOTE:
BLOCKING TO BE INSTALLED
AT ALL STAIRWELL LOCATIONS
AS REQ'D FOR INSTALLATION
OF RAILING BRACKETS

SB-12 COMPLIANCE OPTION

THESE PLANS HAVE BEEN PREPARED IN ACCORDANCE WITH THE SB-12 PRESCRIPTIVE OPTION AS PER SUBSECTION 3.1.1. OF SB-12.
(SEE DRAWING #6 FOR DETAIL)

DESIGN DATA — SITE LOCATION :

COBDEN, ON
SNOW LOAD : 2.5 kPa (PEMBROKE)
SPECIFIED SNOW LOAD : 1.78 kPa
ZONE : 1 (4980 HEATING DEG. DAYS)

DRAWING LOG

PERMIT PRINTS OCT 3/25



ROYAL HOMES
CORPORATION

WINGHAM, ONTARIO - CANADA

COPYRIGHT OWNED BY ROYAL HOMES CORPORATION (2025)

BUILDING CODE QUALIFICATION

THE DRAWING PACKAGE ENCLOSED HAS BEEN REVIEWED IN ACCORDANCE WITH THE QUALIFICATION PROGRAM OUTLINED BY THE O.B.C.

DESIGNER : KEN ATKINSON

BCIN : 23281

SIGNATURE :

FOR : PRIMARY ELEMENT CORPORATION

PROJECT : PM #10771
CUSTOM

DATE : Friday, October 3, 2025

DRAWN BY : OL

APPROVED BY :

CSA CERTIFIED - CAN/CSA-A277-16

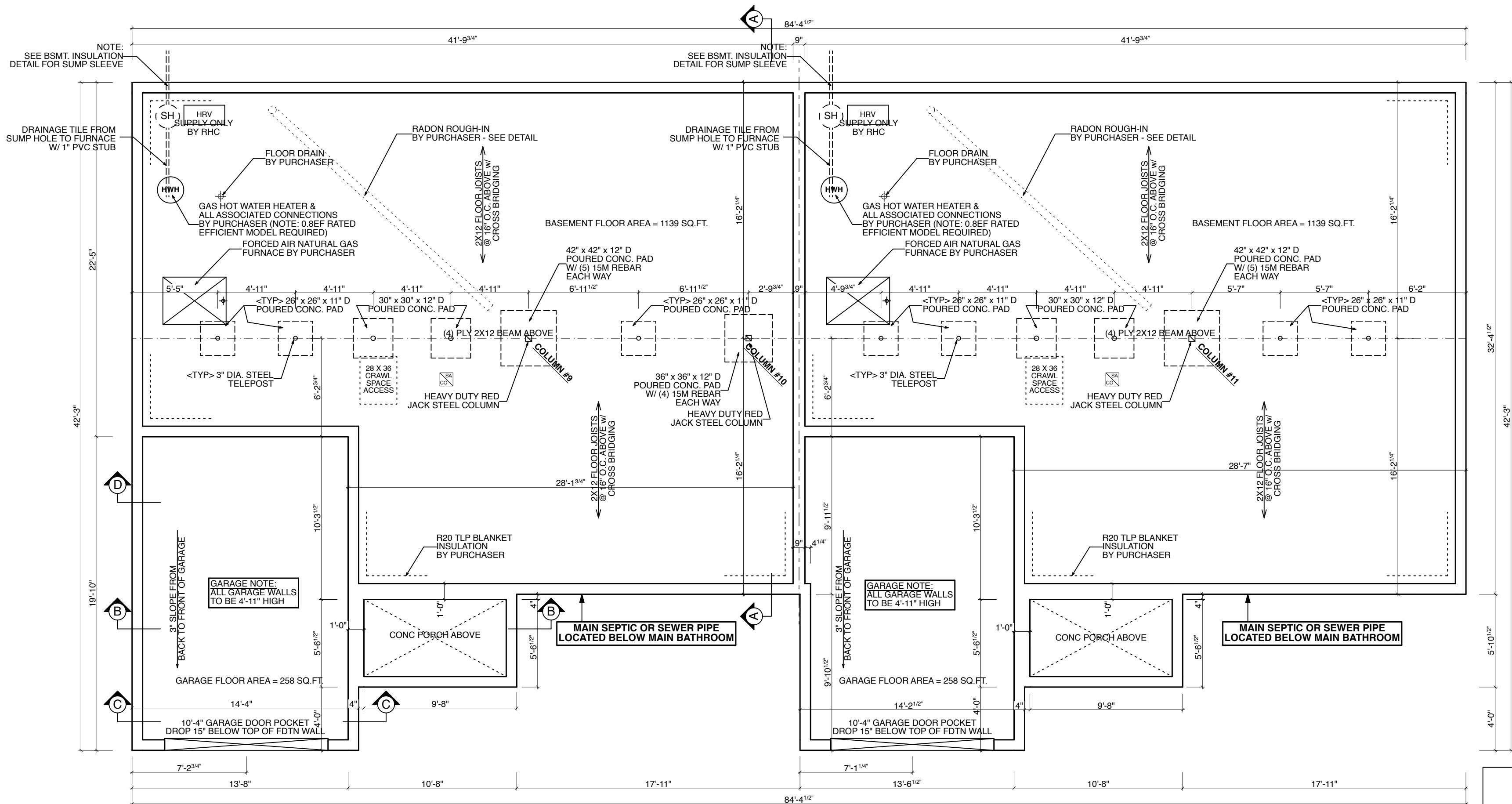
SCALE : 3/16" = 1'-0"

DWG#

3

PERMIT PRINTS

THESE ARE YOUR FINAL PRINTS FROM WHICH WE WILL BUILD YOUR HOME. ANY CHANGES WILL BE SUBJECT TO A MINIMUM \$1000 CHARGE PER CHANGE.



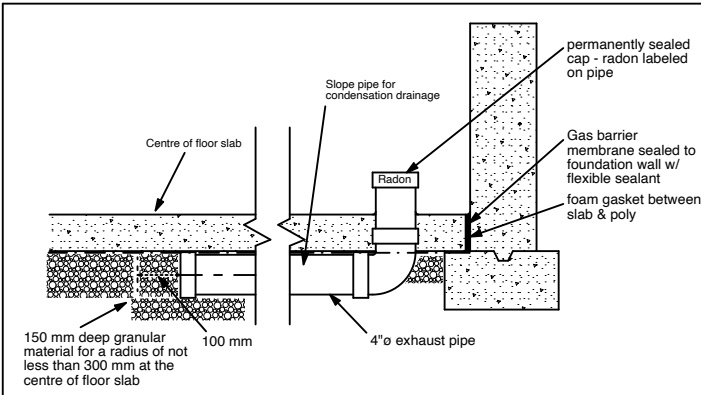
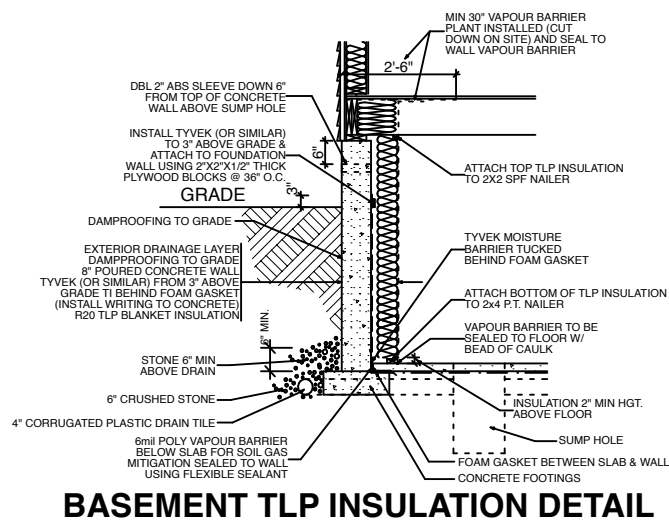
- BUNGALOW NOTE:**
1. SILL PLATE ANCHORS PLACED EVERY 4'-0" MAX.
 2. 2" x 8" SILL PLATE IS PART OF FDTN. PRICE, (NOT INCLUDED IN BASIC HOME).
 3. FULL FDTN. WALLS ARE 4'-11" HIGH.
 4. HEIGHT FROM CONC. BSMT. FLOOR TO HOUSE SUB-FLOOR = 5'-9 3/8".
 5. 8" POURED CONCRETE WALLS UNLESS OTHERWISE NOTED.
 6. 18" X 6" CONCRETE FOOTINGS (8" WALL)
 7. 20" X 6" CONCRETE FOOTINGS (10" WALL)
 8. 24" X 6" CONCRETE FOOTINGS (12" WALL)
 7. C.J. = CONTROL JOINT LOCATION.
 8. 6mil POLY GAS BARRIER UNDER CONC HOUSE SLAB

FOUNDATION BY PURCHASER
PLUMBING PKG. BY PURCHASER
DRAINAGE LAYER BY PURCHASER

FOUNDATION PLAN

NOTE:
ALL CONCRETE COMPRESSIVE STRENGTH AS FOLLOWS:
FOOTINGS = 20 Mpa
FDTN WALLS = 20 Mpa
BASEMENT FL = 25 Mpa
PORCH TOP/GARAGE FLOOR = 32 Mpa W/ 5-8% AIR

CONC PORCH SLAB NOTES:
- CONC SLAB MIN 5" THICK
- SLAB REQUIRES MIN 3" BEARING
- 10M BARS @ 12" O.C. EACH WAY (GRID)
- SLAB ANCHORED TO WALLS W/
24"X24" 10M DOWELS @ 24" O.C.
- MIN 1 3/16" COVER ON ALL REBAR
- METAL Q-DECK



RADON GAS MITIGATION DETAIL

SB-12 COMPLIANCE OPTION

THESE PLANS HAVE BEEN PREPARED IN ACCORDANCE WITH THE SB-12 PRESCRIPTIVE OPTION AS PER SUBSECTION 3.1.1. OF SB-12.
(SEE DRAWING #6 FOR DETAIL)

DESIGN DATA — SITE LOCATION :

COBDEN, ON
SNOW LOAD : 2.5 kPa (PEMBROKE)
SPECIFIED SNOW LOAD : 1.78 kPa
ZONE : 1 (4980 HEATING DEG. DAYS)

DRAWING LOG

PERMIT PRINTS OCT 3/25



ROYAL HOMES CORPORATION
WINGHAM, ONTARIO - CANADA

COPYRIGHT OWNED BY ROYAL HOMES CORPORATION (2025)

BUILDING CODE QUALIFICATION

THE DRAWING PACKAGE ENCLOSED HAS BEEN REVIEWED IN ACCORDANCE WITH THE QUALIFICATION PROGRAM OUTLINED BY THE O.B.C.

DESIGNER : KEN ATKINSON BCIN : 23281

SIGNATURE :

FOR : PRIMARY ELEMENT CORPORATION

PROJECT : PM #10771
CUSTOM

DATE : Friday, October 3, 2025

DRAWN BY : OL

APPROVED BY :

CSA CERTIFIED - CAN/CSA-A277-16

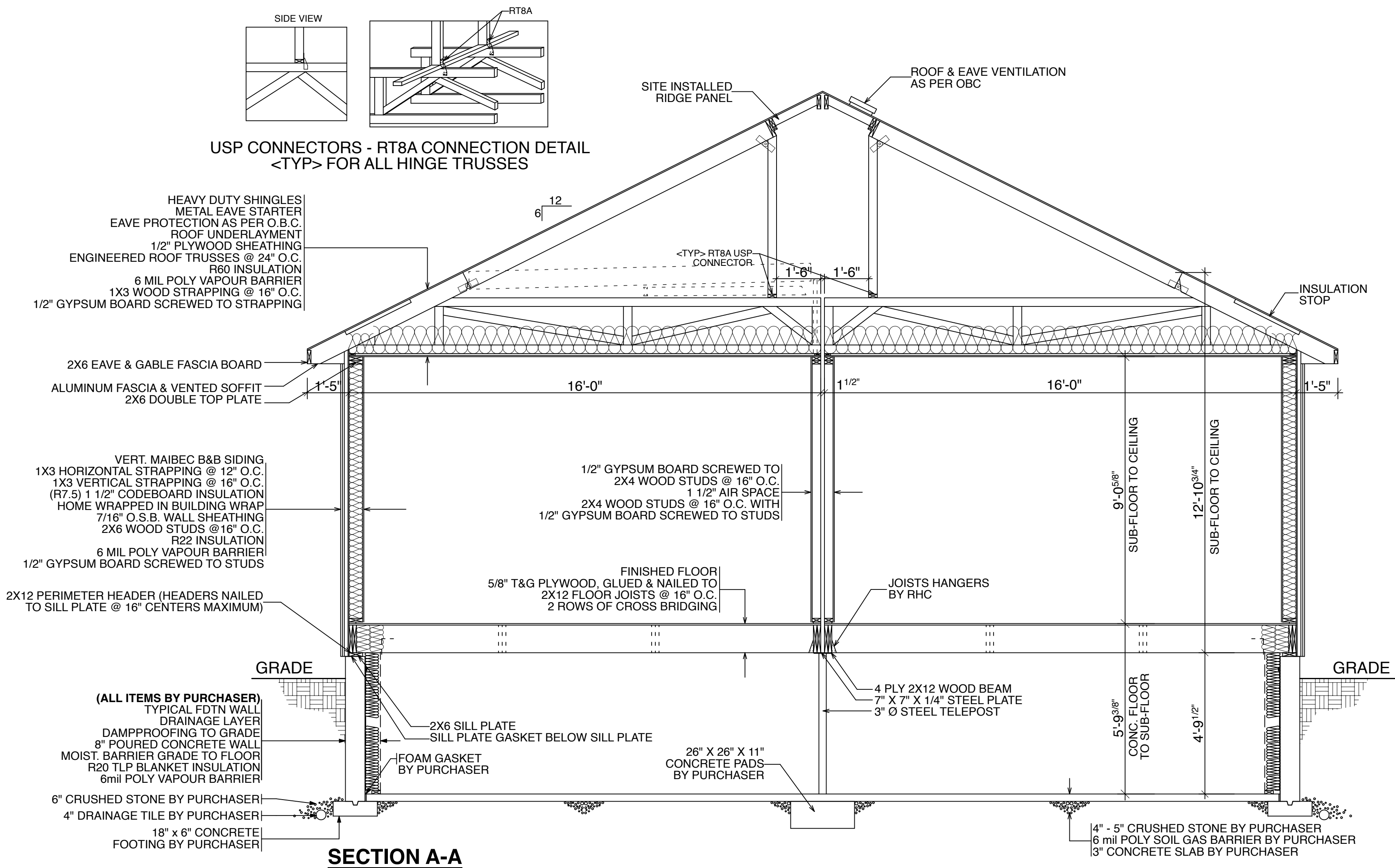
SCALE : 3/16" = 1'-0"

DWG#

4

PERMIT PRINTS

THESE ARE YOUR FINAL PRINTS FROM WHICH WE WILL BUILD YOUR HOME. ANY CHANGES WILL BE SUBJECT TO A MINIMUM \$1000 CHARGE PER CHANGE.



SB-12 COMPLIANCE OPTION

THESE PLANS HAVE BEEN PREPARED IN ACCORDANCE WITH THE
 SB-12 PRESCRIPTIVE OPTION AS PER SUBSECTION 3.1.1. OF SB-12.
 (SEE DRAWING #6 FOR DETAIL)

DESIGN DATA — SITE LOCATION :

COBDEN, ON
 SNOW LOAD : 2.5 kPa (PEMBROKE)
 SPECIFIED SNOW LOAD : 1.78 kPa
 ZONE : 1 (4980 HEATING DEG. DAYS)

PERMIT PRINTS

THESE ARE YOUR FINAL PRINTS FROM WHICH WE WILL
 BUILD YOUR HOME. ANY CHANGES WILL BE SUBJECT
 TO A MINIMUM \$1000 CHARGE PER CHANGE.

DRAWING LOG

PERMIT PRINTS OCT 3/25



**ROYAL HOMES
 CORPORATION**

WINGHAM, ONTARIO - CANADA

COPYRIGHT OWNED BY ROYAL HOMES CORPORATION (2025)

BUILDING CODE QUALIFICATION

THE DRAWING PACKAGE ENCLOSED HAS BEEN
 REVIEWED IN ACCORDANCE WITH THE QUALIFICATION
 PROGRAM OUTLINED BY THE O.B.C.

DESIGNER :KEN ATKINSON

BCIN :23281

SIGNATURE :

FOR : PRIMARY ELEMENT CORPORATION

PROJECT : PM #10771
CUSTOM

DATE : Friday, October 3, 2025

DRAWN BY : OL

APPROVED BY :

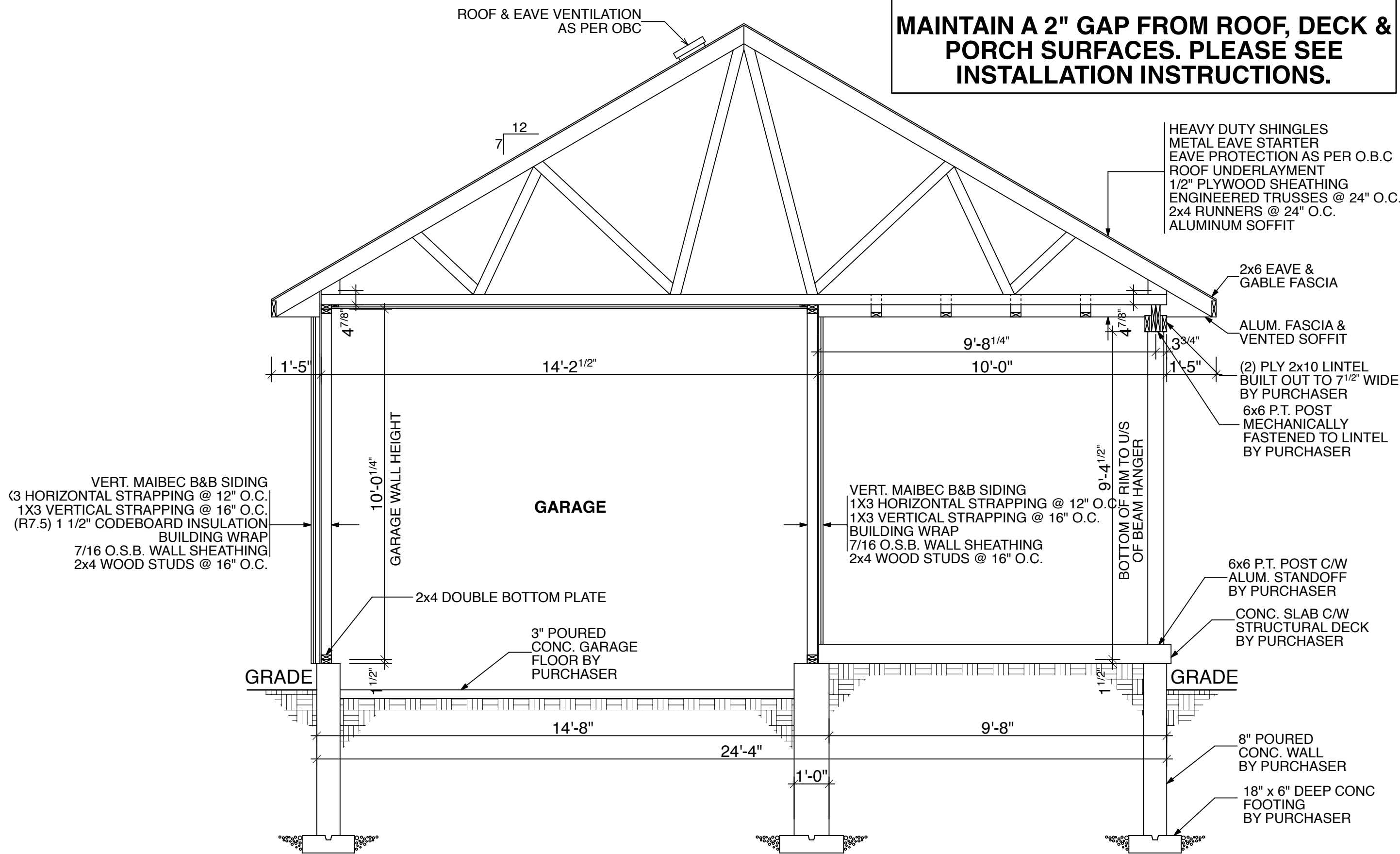
CSA CERTIFIED - CAN/CSA-A277-16

SCALE : 3/8" = 1'-0"

DWG#

5

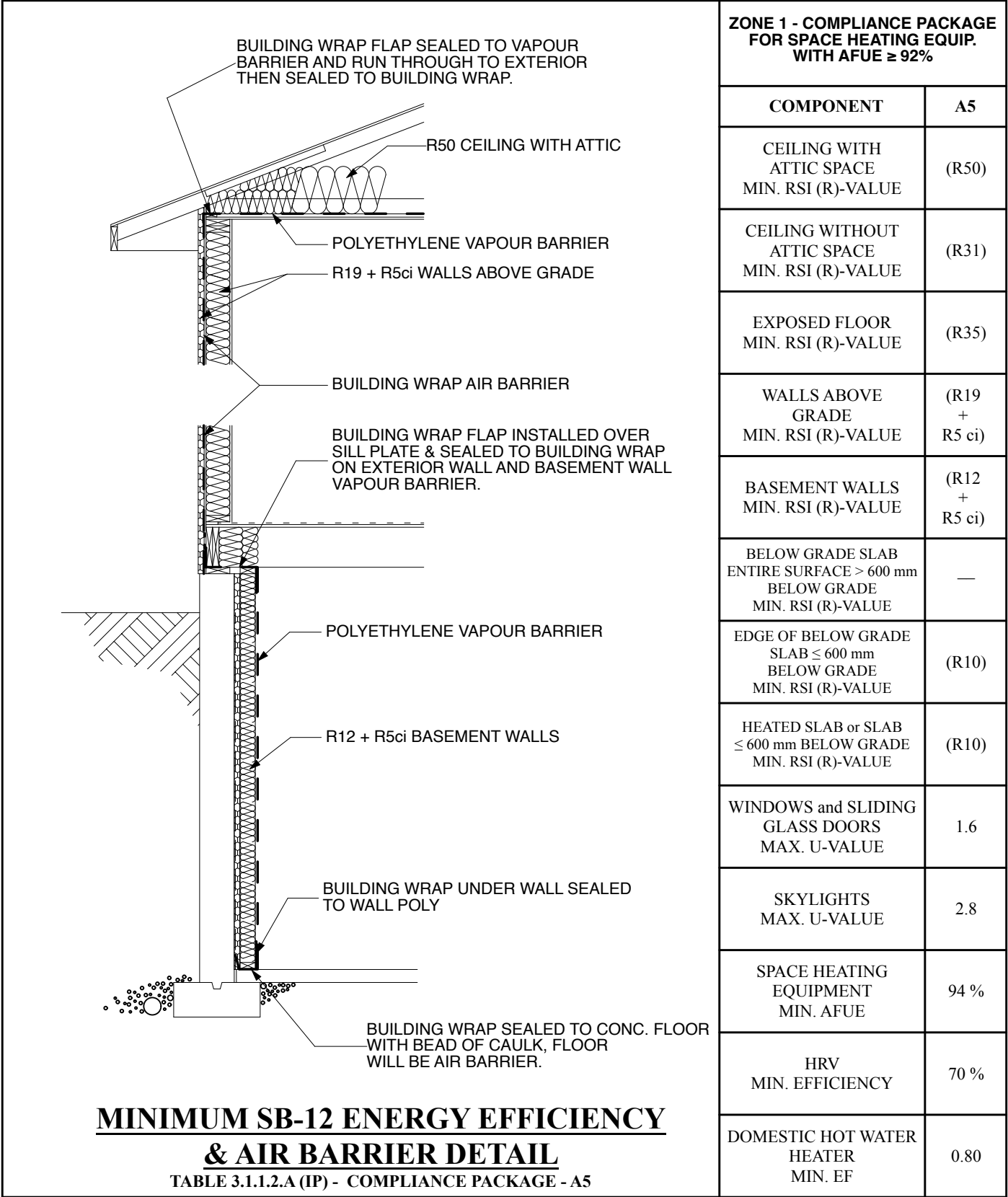
MAIBEC SIDING INSTALLATION NOTE:
MAINTAIN A 2" GAP FROM ROOF, DECK & PORCH SURFACES. PLEASE SEE INSTALLATION INSTRUCTIONS.



**SECTION B-B
(UNIT 'A')**

GARAGE/ PORCH NOTE:
RHC TO SUPPLY ONLY THE FOLLOWING FOR GARAGE & PORCH, **ALL** OTHER ITEMS REQ;D TO COMPLETE ARE BY PURCHASER:
-ROOF TRUSSES & PLYWOOD SHEATHING
-SHINGLES
-SOFFIT & FASCIA
-VINYL SIDING

CONC PORCH SLAB NOTES:
- CONC SLAB MIN 5" THICK
- SLAB REQUIRES MIN 3" BEARING
- 10M BARS @ 12" O.C. EACH WAY(GRID)
- SLAB ANCHORED TO WALLS W/ 24"X24" 10M DOWELS @ 24" O.C.
- MIN 1 3/16" COVER ON ALL REBAR



ZONE 1 - COMPLIANCE PACKAGE FOR SPACE HEATING EQUIP. WITH AFUE ≥ 92%		
COMPONENT	A5	
CEILING WITH ATTIC SPACE MIN. RSI (R)-VALUE	(R50)	
CEILING WITHOUT ATTIC SPACE MIN. RSI (R)-VALUE	(R31)	
EXPOSED FLOOR MIN. RSI (R)-VALUE	(R35)	
WALLS ABOVE GRADE MIN. RSI (R)-VALUE	(R19 + R5 ci)	
BASEMENT WALLS MIN. RSI (R)-VALUE	(R12 + R5 ci)	
BELOW GRADE SLAB ENTIRE SURFACE > 600 mm BELOW GRADE MIN. RSI (R)-VALUE	—	
EDGE OF BELOW GRADE SLAB ≤ 600 mm BELOW GRADE MIN. RSI (R)-VALUE	(R10)	
HEATED SLAB or SLAB ≤ 600 mm BELOW GRADE MIN. RSI (R)-VALUE	(R10)	
WINDOWS and SLIDING GLASS DOORS MAX. U-VALUE	1.6	
SKYLIGHTS MAX. U-VALUE	2.8	
SPACE HEATING EQUIPMENT MIN. AFUE	94 %	
HRV MIN. EFFICIENCY	70 %	
DOMESTIC HOT WATER HEATER MIN. EF	0.80	

SB-12 COMPLIANCE OPTION
THESE PLANS HAVE BEEN PREPARED IN ACCORDANCE WITH THE SB-12 PRESCRIPTIVE OPTION AS PER SUBSECTION 3.1.1. OF SB-12.
(SEE DRAWING #6 FOR DETAIL)


DESIGN DATA — SITE LOCATION :
COBDEN, ON
SNOW LOAD : 2.5 kPa (PEMBROKE)
SPECIFIED SNOW LOAD : 1.78 kPa
ZONE : 1 (4980 HEATING DEG. DAYS)

PERMIT PRINTS
THESE ARE YOUR FINAL PRINTS FROM WHICH WE WILL BUILD YOUR HOME. ANY CHANGES WILL BE SUBJECT TO A MINIMUM \$1000 CHARGE PER CHANGE.

DRAWING LOG	
PERMIT PRINTS OCT 3/25	



ROYAL HOMES CORPORATION
WINGHAM, ONTARIO - CANADA
COPYRIGHT OWNED BY ROYAL HOMES CORPORATION (2025)

BUILDING CODE QUALIFICATION		FOR : PRIMARY ELEMENT CORPORATION		
THE DRAWING PACKAGE ENCLOSED HAS BEEN REVIEWED IN ACCORDANCE WITH THE QUALIFICATION PROGRAM OUTLINED BY THE O.B.C.		PROJECT : PM #10771 CUSTOM	DATE : Friday, October 3, 2025	DWG# 6
			DRAWN BY : OL	
DESIGNER :KEN ATKINSON	BCIN :23281		APPROVED BY :	
SIGNATURE :		CSA CERTIFIED - CAN/CSA-A277-16	SCALE : 3/8" = 1'-0"	

MAINTAIN A 2" GAP FROM ROOF, DECK & PORCH SURFACES. PLEASE SEE INSTALLATION INSTRUCTIONS.

~~RHC TO SUPPLY ONLY THE FOLLOWING~~
FOR GARAGE & PORCH, **ALL** OTHER ITEMS REQ'D
TO COMPLETE ARE BY PURCHASER:
-ROOF TRUSSES & PLYWOOD SHEATHING
-SHINGLES
-SOFFIT & FASCIA
-VINYL SIDING



THESE PLANS HAVE BEEN PREPARED IN ACCORDANCE WITH THE
SB-12 PRESCRIPTIVE OPTION AS PER SUBSECTION 3.1.1. OF SB-12.
(SEE DRAWING #6 FOR DETAIL)

COBDEN, ON
SNOW LOAD : 2.5 kPa (PEMBROKE)
SPECIFIED SNOW LOAD : 1.78 kPa
ZONE : 1 (4980 HEATING DEG. DAYS)

THESE ARE YOUR FINAL PRINTS FROM WHICH WE WILL
BUILD YOUR HOME. ANY CHANGES WILL BE SUBJECT
TO A MINIMUM \$1000 CHARGE PER CHANGE.

PERMIT PRINTS OCT 3/25



COPYRIGHT OWNED BY ROYAL HOMES CORPORATION (2025)

THE DRAWING PACKAGE ENCLOSED HAS BEEN
REVIEWED IN ACCORDANCE WITH THE QUALIFICATION
PROGRAM OUTLINED BY THE O.B.C.

DESIGNER :KEN ATKINSON

SIGNATURE :

PROJECT : PM #10771
CUSTOM

DATE : Friday, October 3, 2025

DRAWN BY : OL

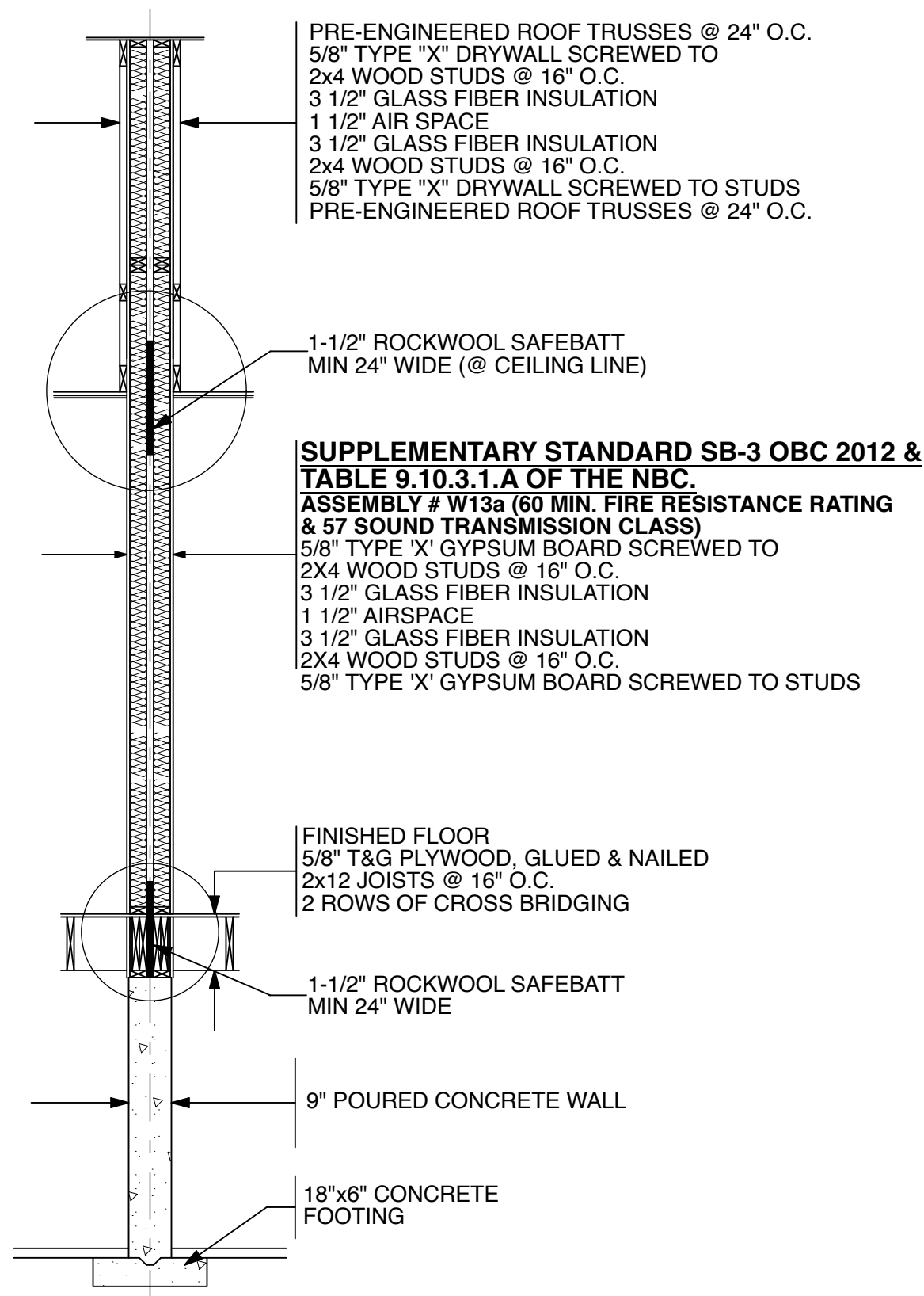
APPROVED BY :

CSA CERTIFIED - CAN/CSA-A277-16

SCALE : $3/8" = 1'-0"$

DWG#	
------	--

7

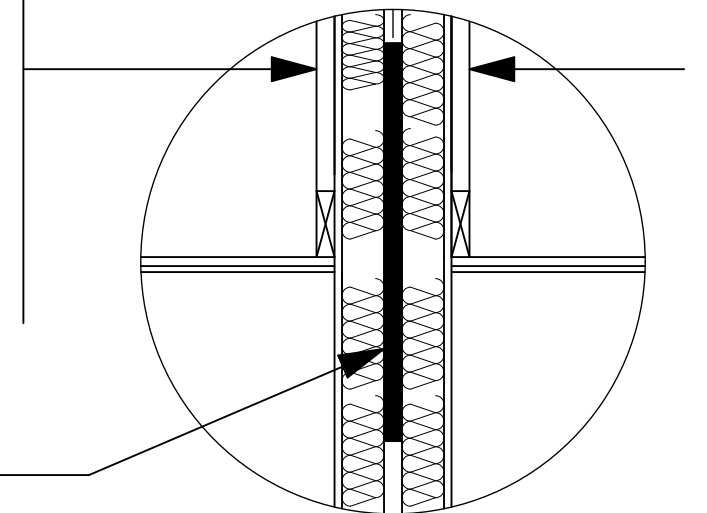


SUPPLEMENTARY STANDARD SB-3 OBC 2012 & TABLE 9.10.3.1.A OF THE NBC.
ASSEMBLY # W13a (60 MIN. FIRE RESISTANCE RATING & 57 SOUND TRANSMISSION CLASS)
5/8" TYPE 'X' GYPSUM BOARD SCREWED TO 2X4 WOOD STUDS @ 16" O.C.
3 1/2" GLASS FIBER INSULATION
1 1/2" AIRSPACE
3 1/2" GLASS FIBER INSULATION
2X4 WOOD STUDS @ 16" O.C.
5/8" TYPE 'X' GYPSUM BOARD SCREWED TO STUDS

CROSS SECTION "E"

(CONTINUOUS FROM THE FOOTING TO THE UNDERSIDE OF THE ROOF DECK)

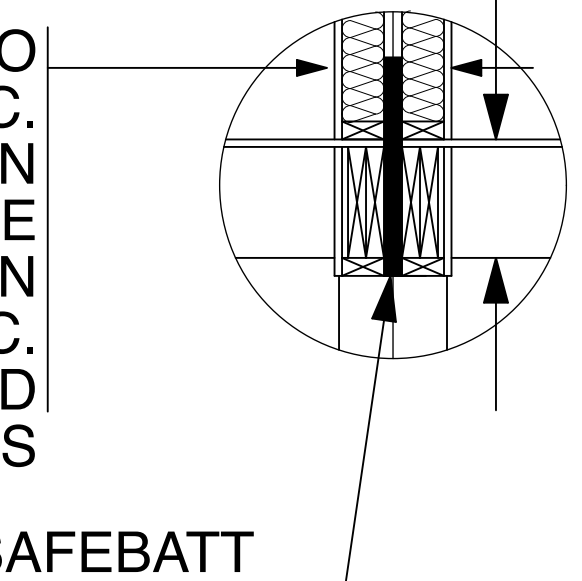
PRE-ENGINEERED ROOF TRUSSES @ 24" O.C.
5/8" TYPE "X" DRYWALL SCREWED TO 2x4 WOOD STUDS @ 16" O.C.
3 1/2" GLASS FIBER INSULATION
1 1/2" AIR SPACE
3 1/2" GLASS FIBER INSULATION
2x4 WOOD STUDS @ 16" O.C.
5/8" TYPE "X" DRYWALL SCREWED TO STUDS
PRE-ENGINEERED ROOF TRUSSES @ 24" O.C.



1-1/2" ROCKWOOL SAFEBATT
MIN 24" WIDE

FINISHED FLOOR
5/8" T&G PLYWOOD, GLUED & NAILED
2x12 JOISTS @ 16" O.C.
2 ROWS OF CROSS BRIDGING

5/8" TYPE 'X' GYPSUM BOARD SCREWED TO 2X4 WOOD STUDS @ 16" O.C.
3 1/2" GLASS FIBER INSULATION
1 1/2" AIRSPACE
3 1/2" GLASS FIBER INSULATION
2X4 WOOD STUDS @ 16" O.C.
5/8" TYPE 'X' GYPSUM BOARD SCREWED TO STUDS



1-1/2" ROCKWOOL SAFEBATT
MIN 24" WIDE

SB-12 COMPLIANCE OPTION

THESE PLANS HAVE BEEN PREPARED IN ACCORDANCE WITH THE SB-12 PRESCRIPTIVE OPTION AS PER SUBSECTION 3.1.1. OF SB-12.
(SEE DRAWING #6 FOR DETAIL)

DESIGN DATA — SITE LOCATION :

COBDEN, ON
SNOW LOAD : 2.5 kPa (PEMBROKE)
SPECIFIED SNOW LOAD : 1.78 kPa
ZONE : 1 (4980 HEATING DEG. DAYS)

PERMIT PRINTS

THESE ARE YOUR FINAL PRINTS FROM WHICH WE WILL BUILD YOUR HOME. ANY CHANGES WILL BE SUBJECT TO A MINIMUM \$1000 CHARGE PER CHANGE.

DRAWING LOG

PERMIT PRINTS OCT 3/25



ROYAL HOMES
CORPORATION

WINGHAM, ONTARIO - CANADA

COPYRIGHT OWNED BY ROYAL HOMES CORPORATION (2025)

BUILDING CODE QUALIFICATION

THE DRAWING PACKAGE ENCLOSED HAS BEEN REVIEWED IN ACCORDANCE WITH THE QUALIFICATION PROGRAM OUTLINED BY THE O.B.C.

DESIGNER : KEN ATKINSON

BCIN : 23281

SIGNATURE :

FOR : PRIMARY ELEMENT CORPORATION

PROJECT : PM #10771
CUSTOM

DATE : Friday, October 3, 2025

DRAWN BY : OL

APPROVED BY :

CSA CERTIFIED - CAN/CSA-A277-16

SCALE : 3/8" = 1'-0"

DWG#

8

UPPER STYLE:	DOOR HDWE:	BULKHEAD: NO
LOWER STYLE:	DRWR HDWE:	MLDG. TYPE: CROWN TO CEILING
STAIN:	CABINET MATERIAL:	

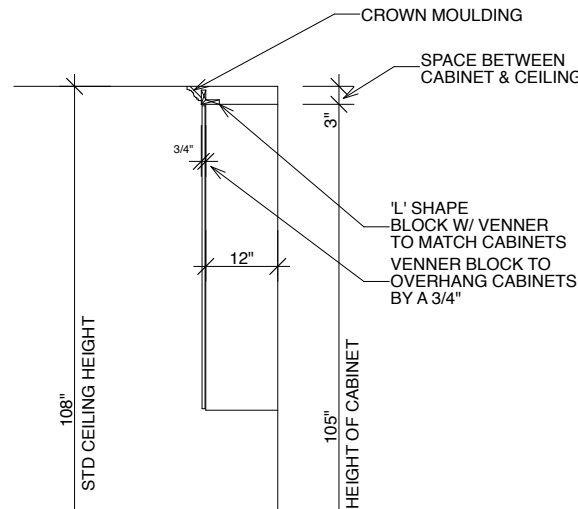
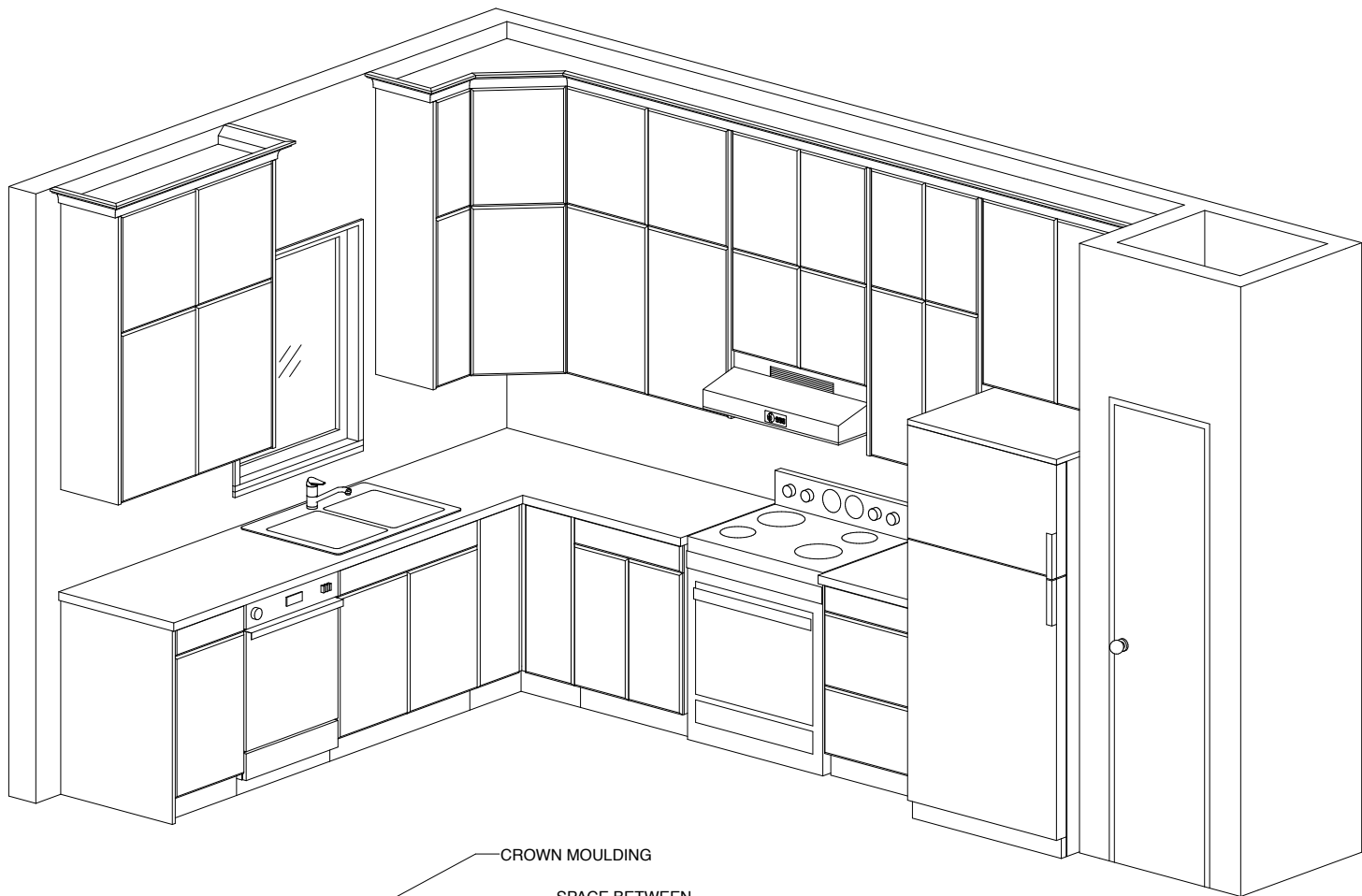
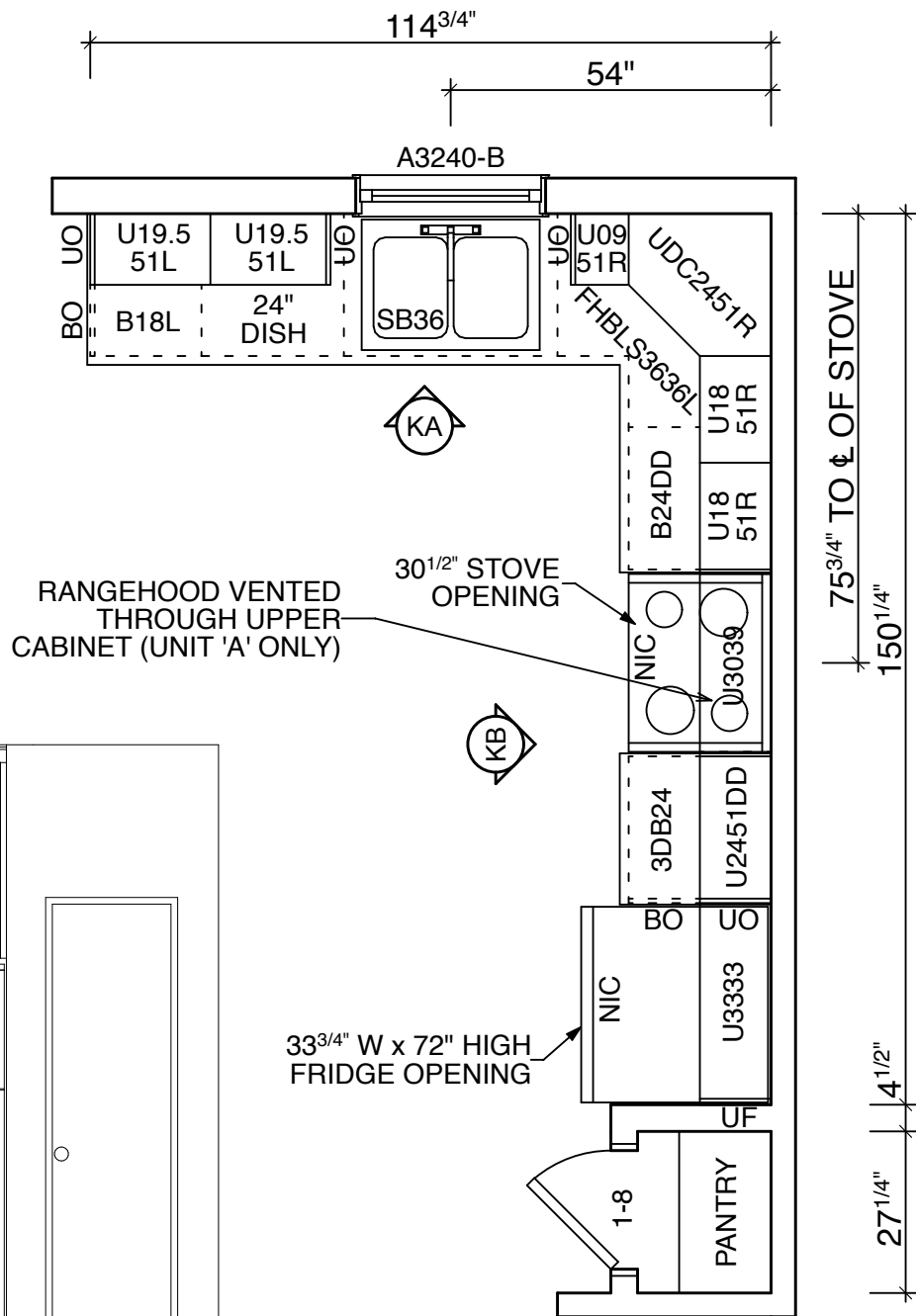
CABINET LEGEND

- B - BASE CABINET
BF - BASE FILLER
EBS - EXTENDED BAR SUPPORT
FHBC - FULL HEIGHT BASE CORNER
FHBLS - FULL HEIGHT BASE LAZY SUSAN
MOC - MICROWAVE
SB - SINK BASE
T - TALL PANTRY CABINET
TF - TALL FILLER
TMOV - TALL MICRO/OVEN CABINET
U - UPPER CABINET
UDC - UPPER DIAGONAL CORNER
UF - UPPER FILLER
3DB - BANK OF 3 DRAWERS
4DB - BANK OF 4 DRAWERS
V - VANITY CABINET
BO - BASE OVERLAY (3/4" THICK)
UO - UPPER OVERLAY (3/4" THICK)
TO - TALL OVERLAY (3/4" THICK)

NOTE:
PURCHASER IS RESPONSIBLE FOR
ACCURACY OF ALL APPLIANCE
OPENING SIZES.

KITCHEN LAYOUT

NOTE:
UPGRADE COUNTERTOP
TO GRANITE



SECTION VIEW



KITCHEN ELEVATION 'KA'



KITCHEN ELEVATION 'KB'

LOWER STYLE:	DOOR HDWE:	BULKHEAD:
STAIN :	DRWR HDWE:	MLDG. TYPE:
	CABINET MATERIAL:	

NOTE:
UPGRADE COUNTERTOP
TO GRANITE

BATH #1

BATH #1 ELEVATION 'VA'

LOWER STYLE:	DOOR HDWE:	BULKHEAD:
STAIN :	DRWR HDWE:	MLDG. TYPE:
	CABINET MATERIAL:	

NOTE:
UPGRADE COUNTERTOP
TO GRANITE

BATH #2

BATH #2 ELEVATION 'VB'

SB-12 COMPLIANCE OPTION

THESE PLANS HAVE BEEN PREPARED IN ACCORDANCE WITH THE
SB-12 PRESCRIPTIVE OPTION AS PER SUBSECTION 3.1.1. OF SB-12.
(SEE DRAWING #6 FOR DETAIL)

DESIGN DATA — SITE LOCATION :

COBDEN, ON
SNOW LOAD : 2.5 kPa (PEMBROKE)
SPECIFIED SNOW LOAD : 1.78 kPa
ZONE : 1 (4980 HEATING DEG. DAYS)

PERMIT PRINTS

THESE ARE YOUR FINAL PRINTS FROM WHICH WE WILL
BUILD YOUR HOME. ANY CHANGES WILL BE SUBJECT
TO A MINIMUM \$1000 CHARGE PER CHANGE.

DRAWING LOG

PERMIT PRINTS OCT 3/25



ROYAL HOMES
CORPORATION

WINGHAM, ONTARIO - CANADA

COPYRIGHT OWNED BY ROYAL HOMES CORPORATION (2025)

BUILDING CODE QUALIFICATION

THE DRAWING PACKAGE ENCLOSED HAS BEEN
REVIEWED IN ACCORDANCE WITH THE QUALIFICATION
PROGRAM OUTLINED BY THE O.B.C.

DESIGNER :KEN ATKINSON

BCIN :23281

SIGNATURE :

FOR : PRIMARY ELEMENT CORPORATION

PROJECT : PM #10771
CUSTOM

DATE : Friday, October 3, 2025

DRAWN BY : OL

APPROVED BY :

CSA CERTIFIED - CAN/CSA-A277-16

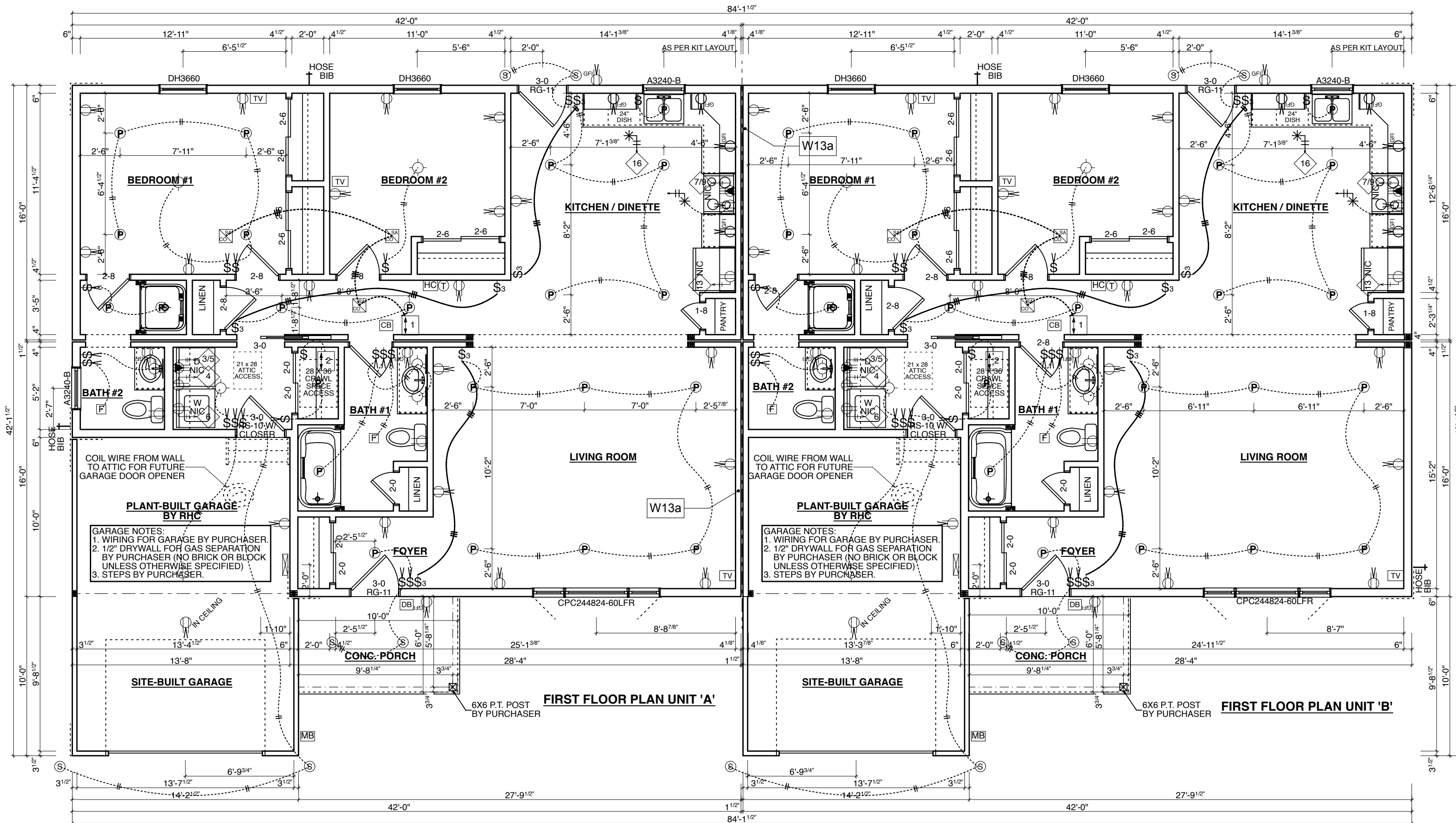
SCALE : 3/8" = 1'-0"

DWG#

9

LEGEND	
	COMBINATION SMOKE ALARM / STROBE / CARBON MONOXIDE DETECTOR (INTERCONNECTED W/ ALL OTHER SMOKE ALARM/STROBE & SMOKE ALARM/STROBE/CO DETECTORS)
	SMOKE ALARM / STROBE UNIT (INTERCONNECTED W/ ALL OTHER SMOKE ALARM/STROBE & SMOKE ALARM/STROBE/CO DETECTORS)
	TELEPHONE JACK ROUGH-IN (Cat 6 WIRE W/ CONDUIT FROM BOX TO UNDER FL)
	TELEVISION JACK ROUGH-IN (Cat 6 & COAXIAL WIRE W/ CONDUIT FROM BOX TO UNDER FL)
	THERMOSTAT LOCATION
	HOSE BIB
	CHIME BOX (ABOVE DOOR)
	DOOR BELL
	HRV CONTROL
	RECESSED POTLIGHT
	RECESSED SOFFIT POTLIGHT
	METER BASE LOCATION
	BATH EXHAUST FAN (CEILING)

ELECTRICAL LEGEND	
	DUPLEX RECEPTACLE
	SWITCHED DUPLEX RECEPTACLE
	SINGLE RECEPTACLE
	RECESSED RECEPTACLE
	GFI DUPLEX RECEPTACLE
	RECEPTACLE W/ (2) USB PORTS
	APPLIANCE RECEPTACLE
	HEAVY DUTY APPLIANCE RECEPTACLE
	CEILING FIXTURE
	WALL MOUNT FIXTURE
	P.S. BASEMENT PULL SWITCH LIGHT
	P.T. BASEMENT PIG TAIL LIGHT
	SWITCH
	3 WAY SWITCH
	4 WAY SWITCH
	DIMMER SWITCH
	ROUGH-IN WIRE TO PANEL
	DOOR BELL
	CHIME BOX
	HRV TIMER
	HRV CONTROL
	JUNCTION BOX (SEE NOTE)
	WIRE TRANSITION BETWEEN 1ST FLOOR AND BASEMENT
	CIRCUIT NUMBER
	LOW VOLTAGE LED LIGHTS
	RECESSED POTLIGHT
	RECESSED EYEBALL POTLIGHT
	14/2 AWG
	14/3 AWG
	12/2 AWG
	10/3 AWG
	8/3 AWG
J BOX NOTE: IF LIGHT FIXTURE BY PURCHASER, RHC TO INSTALL TEMP KEY LAMP HOLDER	



NOTE:
FORCED AIR NATURAL GAS FURNACE
BY PURCHASER

NOTE:
LOW "E" ARGON WINDOWS

NOTE:
DECORA SWITCHES & RECEPTACLES

ELECTRICAL LEGEND			
	DUPLEX RECEPTACLE		DIMMER SWITCH
	SWITCHED DUPLEX RECEPTACLE		ROUGH-IN WIRE TO PANEL
	SINGLE RECEPTACLE		DOOR BELL
	RECESSED RECEPTACLE		CHIME BOX
	GFI DUPLEX RECEPTACLE		HRV TIMER
	RECEPTACLE W/ (2) USB PORTS		HRV CONTROL
	APPLIANCE RECEPTACLE		JUNCTION BOX (SEE NOTE)
	HEAVY DUTY APPLIANCE RECEPTACLE		WIRE TRANSITION BETWEEN 1ST FLOOR AND BASEMENT
	CEILING FIXTURE		P.S. BASEMENT PULL SWITCH LIGHT
	WALL MOUNT FIXTURE		P.T. BASEMENT PIG TAIL LIGHT
	CIRCUIT NUMBER		SWITCH
	LOW VOLTAGE HALOGEN LIGHTS		3 WAY SWITCH
	RECESSED POTLIGHT		4 WAY SWITCH
	RECESSED EYEBALL POTLIGHT		14/2 AWG
	14/3 AWG		12/2 AWG
	10/3 AWG		8/3 AWG
J BOX NOTE: IF LIGHT FIXTURE BY PURCHASER, RHC TO INSTALL TEMP KEY LAMP HOLDER			

SB-12 COMPLIANCE OPTION

THESE PLANS HAVE BEEN PREPARED IN ACCORDANCE WITH THE SB-12 PRESCRIPTIVE OPTION AS PER SUBSECTION 3.1.1. OF SB-12.
(SEE DRAWING #6 FOR DETAIL)

DESIGN DATA — SITE LOCATION :

COBDEN, ON
SNOW LOAD : 2.5 kPa (PEMBROKE)
SPECIFIED SNOW LOAD : 1.78 kPa
ZONE : 1 (4980 HEATING DEG. DAYS)

PERMIT PRINTS

THESE ARE YOUR FINAL PRINTS FROM WHICH WE WILL BUILD YOUR HOME. ANY CHANGES WILL BE SUBJECT TO A MINIMUM \$1000 CHARGE PER CHANGE.

DRAWING LOG

PERMIT PRINTS OCT 3/25



ROYAL HOMES
CORPORATION

WINGHAM, ONTARIO - CANADA

COPYRIGHT OWNED BY ROYAL HOMES CORPORATION (2025)

BUILDING CODE QUALIFICATION

THE DRAWING PACKAGE ENCLOSED HAS BEEN REVIEWED IN ACCORDANCE WITH THE QUALIFICATION PROGRAM OUTLINED BY THE O.B.C.

DESIGNER : KEN ATKINSON

BCIN : 23281

SIGNATURE :

FOR : PRIMARY ELEMENT CORPORATION

PROJECT : PM #10771
CUSTOM

DATE : Friday, October 3, 2025

DRAWN BY : OL

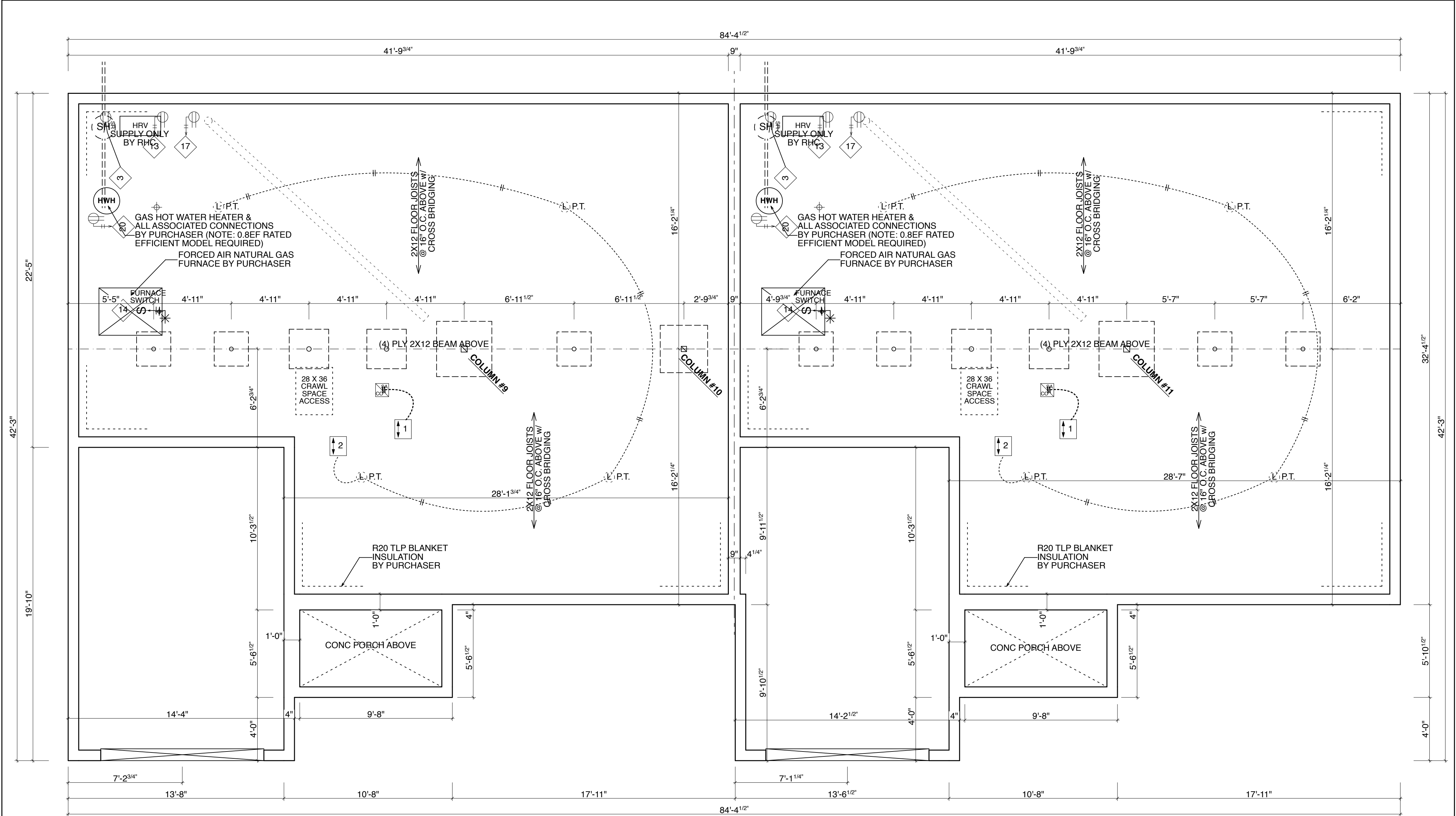
APPROVED BY :

CSA CERTIFIED - CAN/CSA-A277-16

SCALE : 3/16" = 1'-0"

DWG#

E1




FOUNDATION PLAN

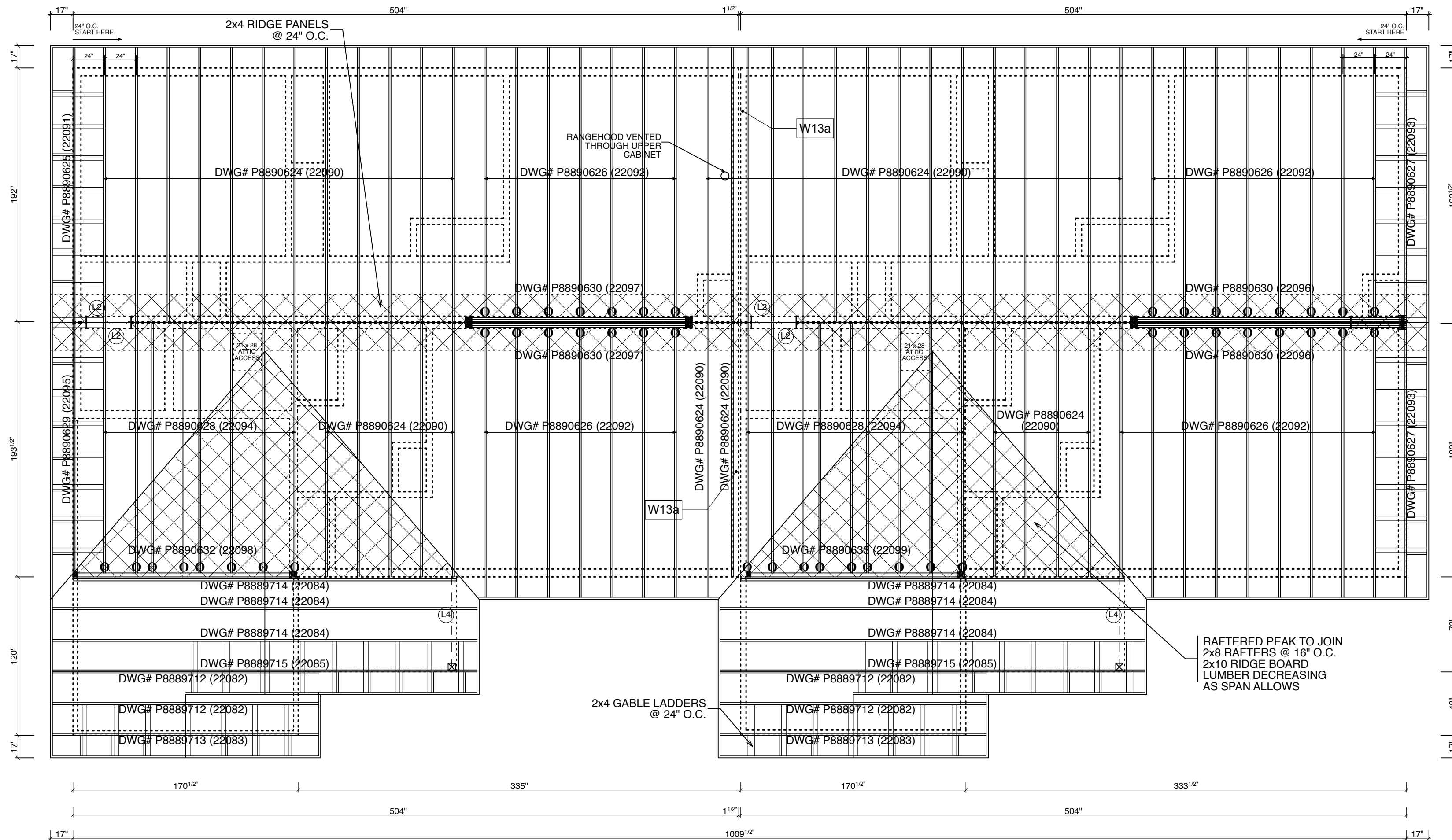
SB-12 COMPLIANCE OPTION

THESE PLANS HAVE BEEN PREPARED IN ACCORDANCE WITH THE SB-12 PRESCRIPTIVE OPTION AS PER SUBSECTION 3.1.1. OF SB-12. (SEE DRAWING #6 FOR DETAIL)

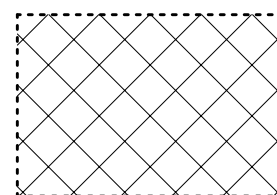
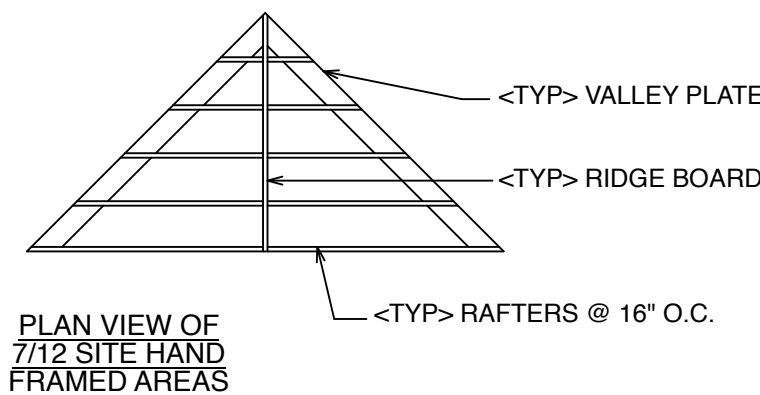
DESIGN DATA — SITE LOCATION :

COBDEN, ON
SNOW LOAD : 2.5 kPa (PEMBROKE)
SPECIFIED SNOW LOAD : 1.78 kPa
ZONE : 1 (4980 HEATING DEG. DAYS)

<div>PERMIT PRINTS</div> <div>THESE ARE YOUR FINAL PRINTS FROM WHICH WE WILL BUILD YOUR HOME. ANY CHANGES WILL BE SUBJECT TO A MINIMUM \$1000 CHARGE PER CHANGE.</div>	DRAWING LOG		<div><div>ROYAL HOMES CORPORATION</div><div>WINGHAM, ONTARIO - CANADA</div><div><small>COPYRIGHT OWNED BY ROYAL HOMES CORPORATION (2025)</small></div></div>	BUILDING CODE QUALIFICATION		FOR : PRIMARY ELEMENT CORPORATION	
	PERMIT PRINTS OCT 3/25			THE DRAWING PACKAGE ENCLOSED HAS BEEN REVIEWED IN ACCORDANCE WITH THE QUALIFICATION PROGRAM OUTLINED BY THE O.B.C.		PROJECT : PM #10771	DATE : Friday, October 3, 2025
				DESIGNER :KEN ATKINSON		BCIN :23281	DRAWN BY : OL
				SIGNATURE :		CSA CERTIFIED - CAN/CSA-A277-16	APPROVED BY :
						SCALE : 1/4" = 1'-0"	
						DWG#	
						E2	



PRIMARY ELEMENT RESIDENCE - PM #10771
ROOF TRUSS LAYOUT



- REPRESENTS AREA TO BE
HAND FRAMED ON SITE.

- ⊖ SGL HANGERS - USP STRUCTURAL CONNECTORS - HUS26
- ⊗ DBL HANGERS - USP STRUCTURAL CONNECTORS - HD210-2

TRUSS HANGER TABLE		NAILS
HANGER	NAILING	16d = 0.162" x 3-1/2" 10d = 0.148" x 3"
SINGLE - HUS26	HEADER - (14) 16d JOIST - (6) 16d	
DOUBLE - HD210-2	HEADER - (18) 16d JOIST - (10) 10d	NOTE: IF OTHER HANGERS ARE SUBSTITUTED OR USED NAILING IS TO BE CONFIRMED.
TRIPLE - HD210-3	HEADER - (18) 16d JOIST - (10) 10d	

SB-12 COMPLIANCE OPTION

THESE PLANS HAVE BEEN PREPARED IN ACCORDANCE WITH THE
SB-12 PRESCRIPTIVE OPTION AS PER SUBSECTION 3.1.1. OF SB-12.
(SEE DRAWING #6 FOR DETAIL)

DESIGN DATA — SITE LOCATION :

COBDEN, ON
SNOW LOAD : 2.5 kPa (PEMBROKE)
SPECIFIED SNOW LOAD : 1.78 kPa
ZONE : 1 (4980 HEATING DEG. DAYS)

PERMIT PRINTS

THESE ARE YOUR FINAL PRINTS FROM WHICH WE WILL
BUILD YOUR HOME. ANY CHANGES WILL BE SUBJECT
TO A MINIMUM \$1000 CHARGE PER CHANGE.

DRAWING LOG

PERMIT PRINTS OCT 3/25



ROYAL HOMES
CORPORATION

WINGHAM, ONTARIO - CANADA

COPYRIGHT OWNED BY ROYAL HOMES CORPORATION (2025)

BUILDING CODE QUALIFICATION

THE DRAWING PACKAGE ENCLOSED HAS BEEN
REVIEWED IN ACCORDANCE WITH THE QUALIFICATION
PROGRAM OUTLINED BY THE O.B.C.

DESIGNER :KEN ATKINSON

BCIN :23281

SIGNATURE :

FOR : PRIMARY ELEMENT CORPORATION

PROJECT : PM #10771
CUSTOM

DATE : Friday, October 3, 2025

DRAWN BY : OL

APPROVED BY :

CSA CERTIFIED - CAN/CSA-A277-16

SCALE :

DWG#

S1